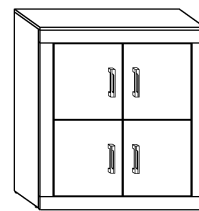


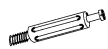


VRN-01 VERIN - KOMODA

→ 90 ↑ 100 ↘ 44



x 19



(a)

x 3



(b)

x 22



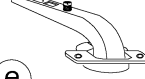
(c)

x 16



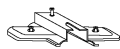
(d)

x 8



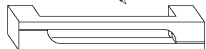
(e)

x 8



(f)

x 4



(g)

x 4



(h)

x 8



(i)

x 4



(j)

x 24 (3,5x16)



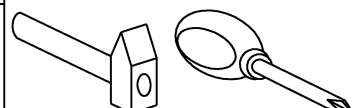
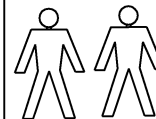
(k)

x 40



(l)

40 min

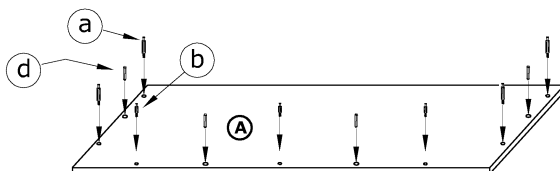


1 - FAZY MONTAŻU

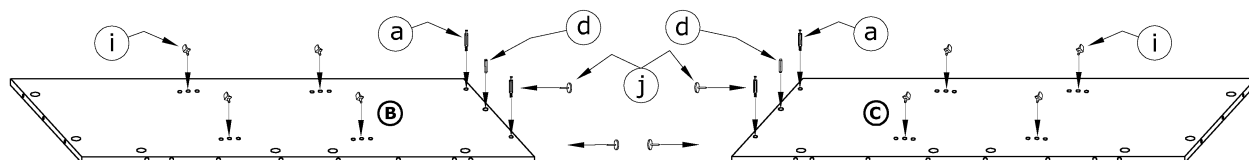
A - OZNACZENIE ELEMENTÓW

a - OZNACZENIE AKCESORIÓW

1



2



3

